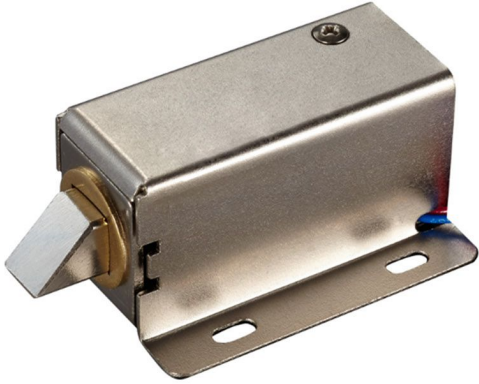


FE-302A

ELECTRIC SOLENOID CABINET LOCK



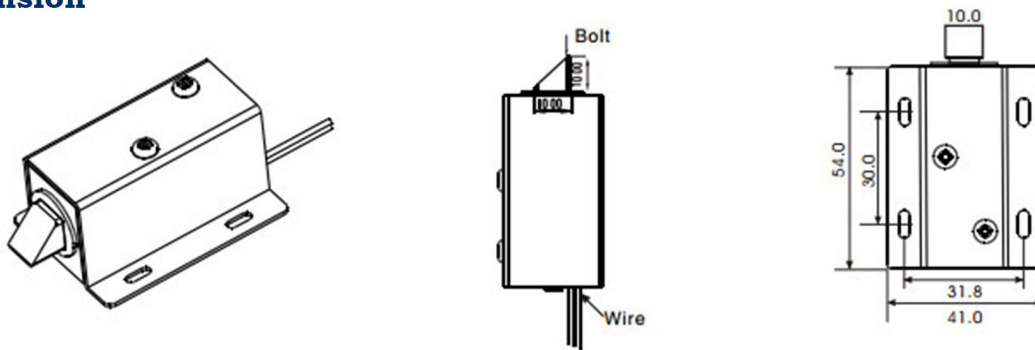
Product Features

- Electric solenoid cabinet lock with cycle lock cylinder.
- Suitable for cabinet, drawer, mini door, etc.

Technical Specifications

Model	FE-302A
Voltage	12VDC
Current	0.6A
Temperature	-30°C ~+50°C
Lock Dimension	54.5x41Wx28H (mm)
Bolt Dimension	10Lx10Wx10H (mm)
Weight	180g

Dimension



Installation

