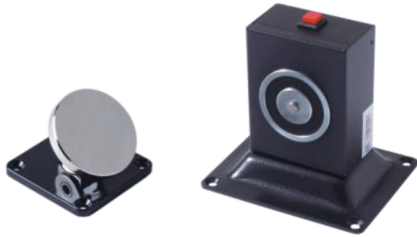


# F-D605

## FLOOR AND WALL MOUNT DOOR HOLDER



### Product Features

- Emergency Release Button/Test Button.
- Reliable Fail-Safe mechanism.
- Durable and silence operation.
- Low current consumption.
- Floor and wall mounting direction.
- Dual voltage: 12V/24V DC.

### Technical Specifications

Model	F-D605
Holding Force	50kg (110lbs)
Voltage	12V/24V DC
Current Draw	12V/180mA 24V/70mA
Suitable Humidity	0~95%
Surface Temp	≤+20°C
Operating Temp	0°C+55°C (14-131F)
Suitable for	All Kinds of Single/ Double Smokeproof Doors
Optional	Manual door release button
Finishes for Shell	High temperature paint environmental protection zinc
Finishes for Armature	Cromium
Size	116Lx93Wx118H (mm)
Weight	1.4kg

### Installation

1. The default setting is 24VDC.
2. Red wire is +, black wire is -.
3. Release the red button by hand in emergency.

