

FM-350ST

800lbs - ELECTRO MAGNETIC LOCK (MONITORED)

Product Features



- With LED lights on.
- Signal output to indicate the lock status (monitored).
- Time delay: 0,3,6 seconds delay
- Low power consumption with high efficiency.
- Reliable holding force: 800lbs.
- High strength material, anodized aluminum housing.
- Special anti-residual magnetic design makes automatic access control safer and more convenient.
- Durable and silence operation.
- Suitable for wooden door, glass door, metal door, etc.

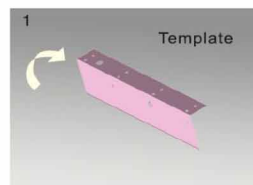
Technical Specifications

Model	FM-350ST
Holding Force	800lbs (350Kg)
Material	Finishes for shell: Anodized aluminum Finishes for magnet: Zinc Finishes for armature: Zinc
Feature	Fail-safe: Power to lock (signal output, monitored) Time delay: 0,3,6 seconds delay
Voltage	DC 12V
Current	12V/450mA
Door	Single door
Lock Size	246Lx55Wx28H (mm)
Armature Size	158Lx11Wx44H (mm)

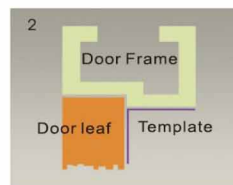
Installation



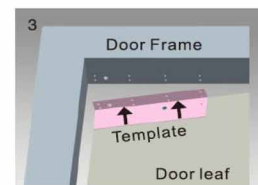
Steps



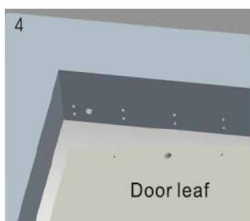
1 Fold the plate to 90° .



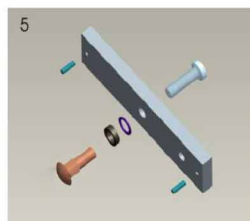
2 Close the door first, then place the upper side of template on door frame, while adjust the left side next to the door leaf.



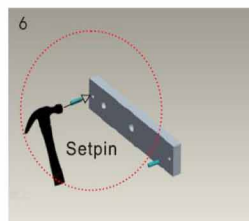
3 Mark screw positions of armature plate and magnetic lock on door leaf and door frame respectively.



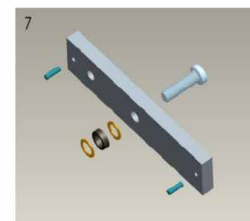
4 Drill holes based on the marked positions.



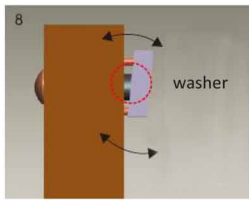
5 Make a combination based on the picture.



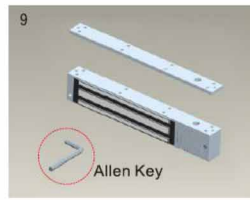
6 Strike the pin into the armature plate slightly (to avoid movement).



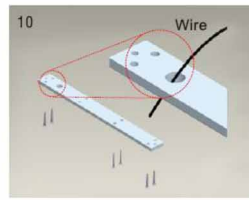
7 Make a combination based on the picture (add washer accordingly).



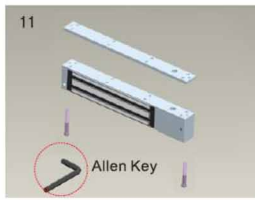
Place the washer's between armature plate and door leaf.



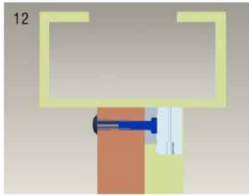
Use Allen key to remove the mounting plate from lock body.



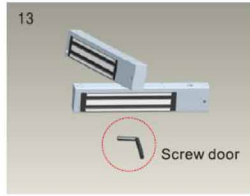
Fix the mounting plate on the door frame according to the holes drilled earlier.



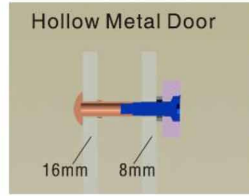
Use Allen key to screw the lock body on the mounting plate.



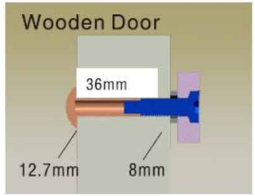
Close the door to test holding force. The angle between armature plate and magnetic lock can be adjusted by adding or reducing washers.



After all the appropriate procedures, the holding force can be maximized. Finally, fix the tamper screw.



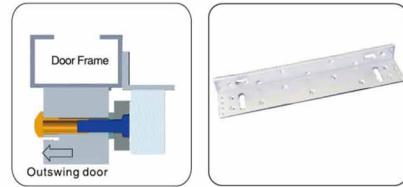
Hollow Metal Door
Drill a hole
Inside: Diameter is 8mm
Outside: Diameter is 16mm



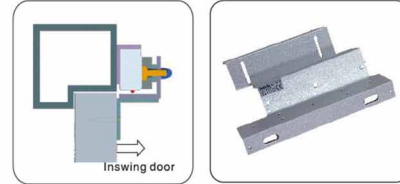
Wooden Door
Drill a hole
Inside: Diameter is 8mm
Outside: Diameter is 12.7mm

Bracket Installation:

L Bracket-For outward opening door
When the door frame thickness is less than 42mm, L bracket is needed.

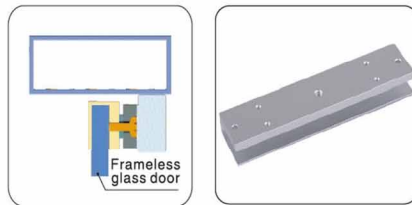


ZL Bracket-For inward opening door
For inward opening door, ZL bracket is needed.

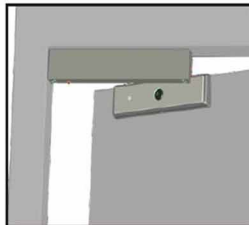


U Bracket

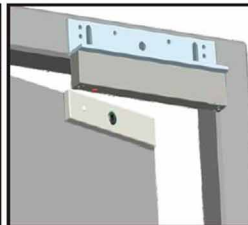
For the frameless glass door. U bracket is needed.



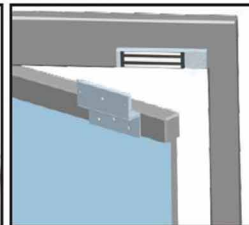
Bracket Mounting:



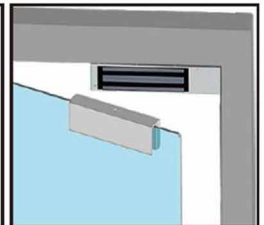
Demonstration of Standard Installation



Demonstration of L Bracket Installation



Demonstration of ZL Bracket Installation



Demonstration of UL Bracket Installation