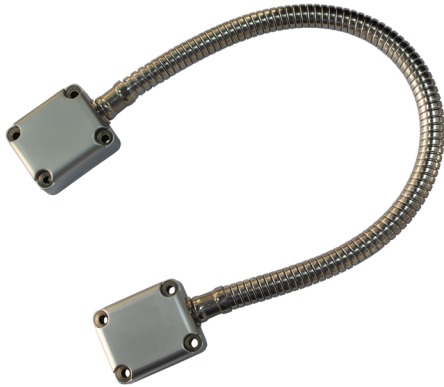


FL-401

DOOR LOOP



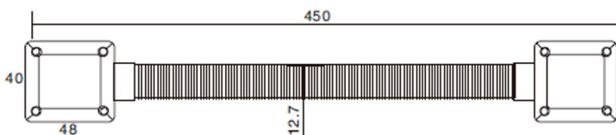
Product Features

- Material: 304 stainless steel.
- Special design, applicable for access control use, to protect the wire when install the EM lock, magnetic contact and exit button on the door.
- It is convenient to use and beautiful.

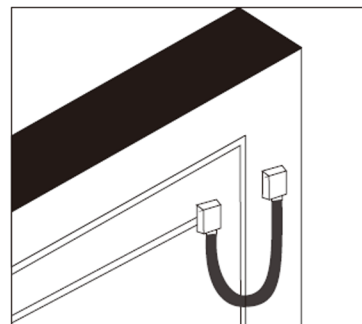
Technical Specifications

Model	FL-401
Material	304 Stainless Steel
Finished for shell	Painted by high temperature
Installation Mode	Surface mount
Suitable Range	Prevent the wire from malicious damage
Operating Temperature	-20°C ~ +55°C (14-131F)
Operating Humidity	0-95% (Relative humidity)
Dimension	450(L) mm x 12.7(W) mm diameter
Weight	270g

Dimensions



Installation



Installation